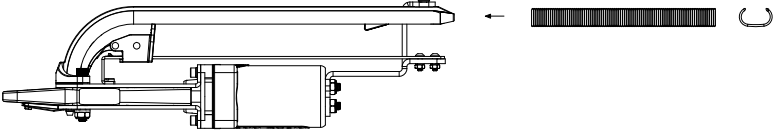
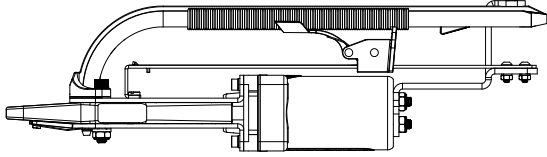
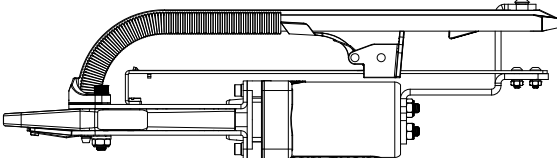




PNEUMATIC C-RING TOOL AC41M SERIES



OPERATING INSTRUCTIONS

<p>STEP 1. Load C-Ring on the magazine and push C-Ring till angle of magazine</p>	
<p>STEP 2. Push back pusher spring to end position of magazine</p>	
<p>STEP 3. Hold pusher and engage pusher with C-Ring and push pusher forward. Completed loading C-Ring on the magazine.</p>	

Note: New design of pusher (with two ears), easier loading C-Ring.

This tool is compliant with or conforms to EN 792-13

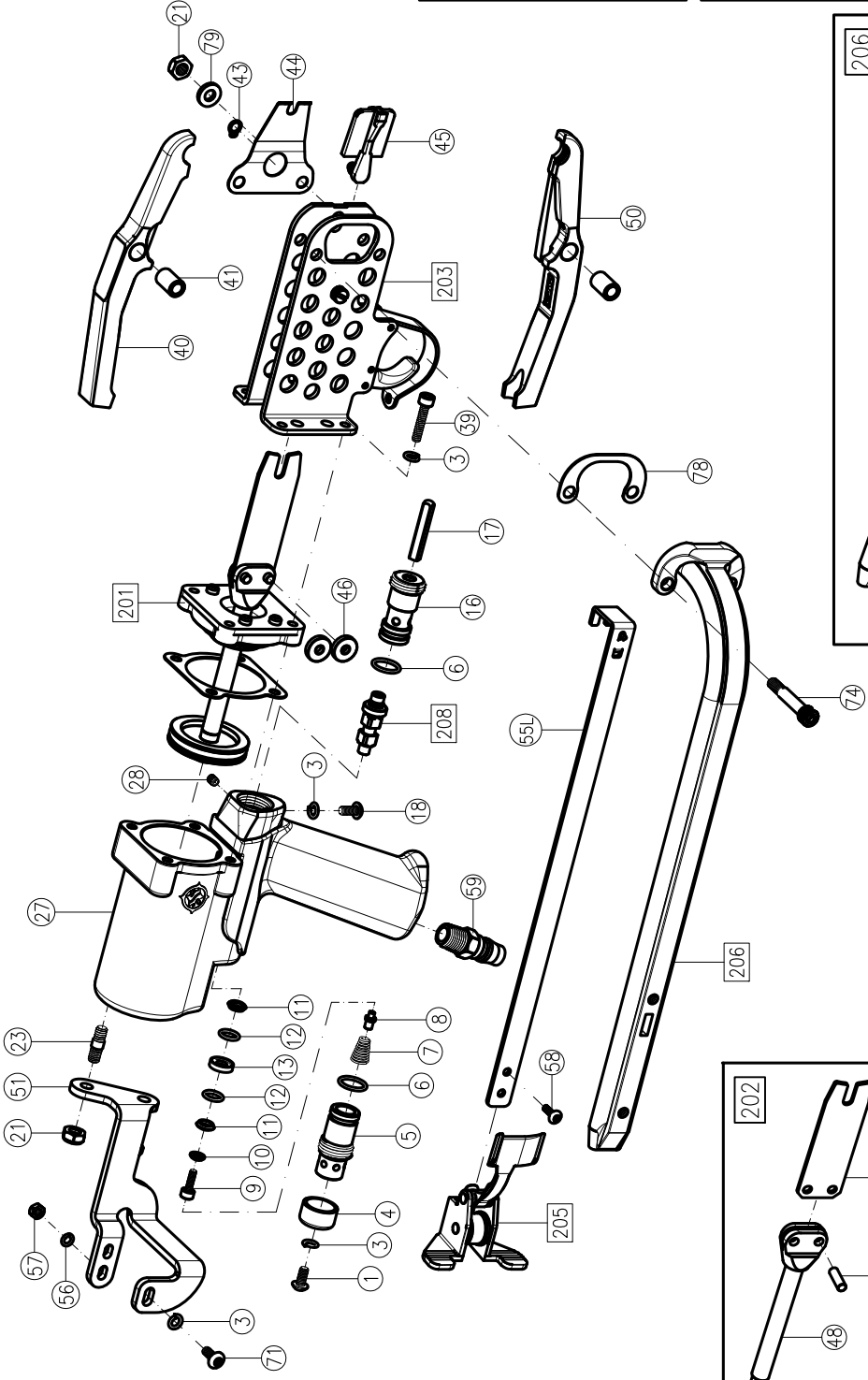
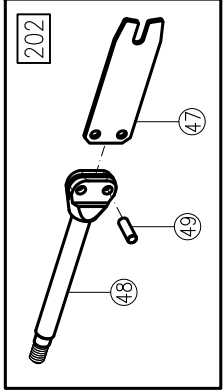
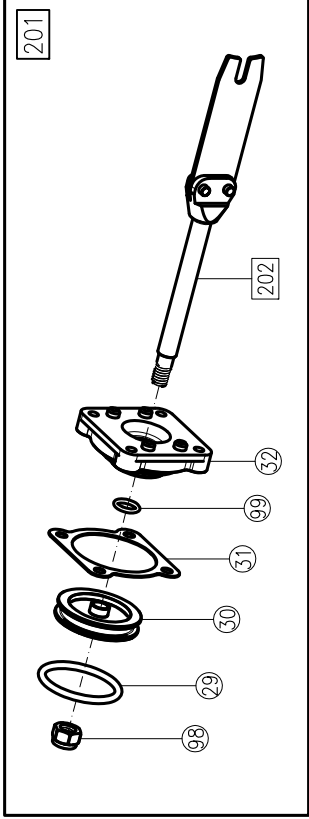
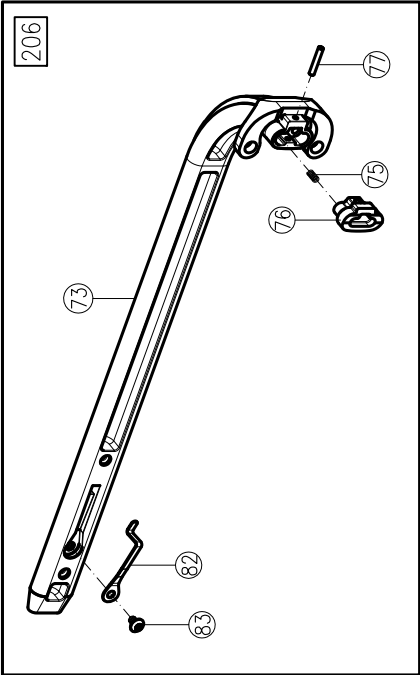
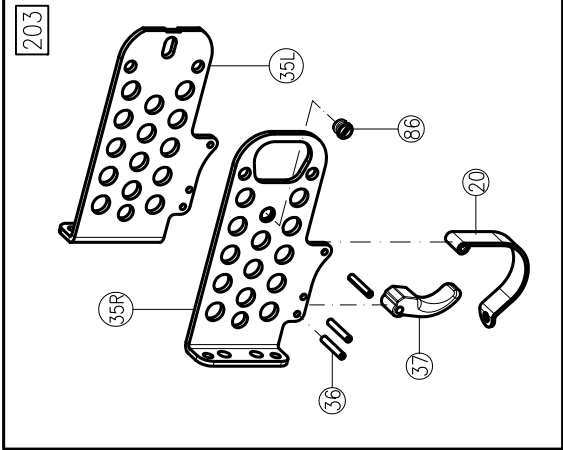
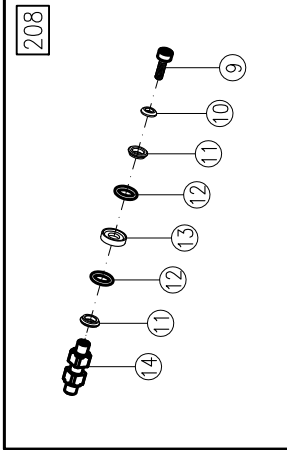
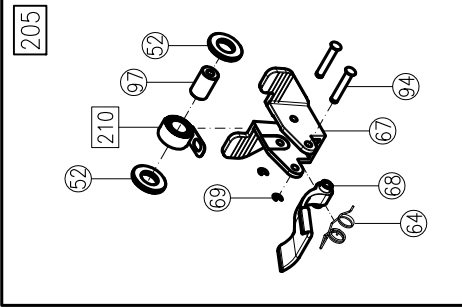
ANN-CHAIN ENTERPRISE CO., LTD.

NO.65-5, LANE 540, YOAN-FONG RD., CHANG HUA CITY, TAIWAN, R.O.C.

TEL: 886-4-7521297 FAX: 886-4-7521293

WEB SITE: www.ann-chain.com E-mail: annchain@ms8.hinet.net





ITEM	DESCRIPTION	MODEL	PART NUMBER	Q'TY	ITEM	DESCRIPTION	MODEL	PART NUMBER	Q'TY
1	Throttle Valve Spacer Assy.		AC01001	1	32	Piston Stop Spacer		AC41032	1
3	Shakeproof Lock Washer		AC01003	7	35R	Side Plate (Right)		AC4135R	1
4	Air Deflector		AC01004	1	35L	Side Plate (Left)		AC4135L	1
5	Rear Valve Seat		AC01005	1	36	Roll Pin		AC41036	3
6	O-Ring		AC01006	1	37	Trigger		AC01037	1
7	Throttle Spring		AC01007	1	39	Socket Head Cap Screw		AC01039	4
8	Throttle Spring Locator		AC01008	1			AC41	AC41040	
9	Throttle Valve Screw		AC01009	2			AC42	AC42040	
10	Valve Screw Washer		AC01010	2	40	Upper Jaw	AC43	AC43040	1
11	O-Ring Support		AC01011	2			AC44	AC44040	
12	O-Ring		AC01012	4			AC45	AC45040	
13	O-Ring Center Support		AC01013	1	41	Jaw Bushing		AC41041	2
14	Throttle Valve Spacer		AC01014	1	43	Latch Pin Clip		AC01043	1
16	Front Valve Seat		AC01016	1	44	Latch Spring		AC41044	1
17	Throttle Stem		AC01017	1	45	Latch		AC41045	1
18	Button Head Cap Screw		AC01018	1	46	Roller		AC02046	4
20	Trigger Guard		AC01020	1			AC41/42	AC41047	
21	Flexloc Nut		AC01021	4			AC43	AC43047	1
23	Stud		AC01023	2			AC44	AC44047	
27	Housing with Rubber		AC41027	1			AC45	AC45047	
28	Set Screw		AC01028	2			AC41/42	AC41048	
29	O-Ring		AC41029	1			AC43	AC43048	
30	Piston		AC41030	1			AC44	AC44048	
31	Cylinder Gasket		AC41031	1			AC45	AC45048	

ITEM	DESCRIPTION	MODEL	PART NUMBER	QTY	ITEM	DESCRIPTION	MODEL	PART NUMBER	QTY
49	Roller Pin		AC41049	2	77	Roll Pin		AC02077	1
50	Lower Jaw	AC41	AC41050	1	78	Magazine Shim		AC41078	1
		AC42	AC42050		82	Clip Anti-Backup		AC02082	1
		AC43	AC43050		83	Screw		AC01M083	1
		AC44	AC44050		86	Plate Screw		AC01M086	1
		AC45	AC45050		94	Pusher Pin		AC01M094	2
51	Feeder Arm		AC41M051	1	97	Spring Roll		AC01M097	1
52	Plastic Washer		AC01M052	2	98	Nut		AC01067	1
55L	Feeder Guid Rail		AC41M55L	1	99	O-Ring		AC41099	1
56	Washer		AC01056	2	201	Piston Rod	AC41/42	AC41201	1
57	Nut		AC41057	2			AC43	AC43201	
58	Screw		AC41058	2			AC44	AC44201	
59	Inlet Bushing		AC01059	1			AC45	AC45201	
64	Pusher Spring		AC01M064	1			AC41/42	AC41202	
67	Pusher Set		AC41M067	1	202	Piston Rod Assy.	AC43	AC43202	1
68	Pusher		AC41M068	1			AC44	AC44202	
69	Stop Ring		AC01M069	1			AC45	AC45202	
71	Screw		AC01071	1	203	Frame Assy.		AC41203	1
73	Magazine		AC41073	1	205	Pusher Assy.		AC41M205	1
74	Jaw Bolt		AC01074	2	206	Magazine Assy.		AC41206	1
75	Magazine Spring		AC01075	2	208	Throttle Valve Spacer Assy.		AC01208	1
76	Magazine Shoe		AC41076	1	210	Spring Assy.		AC01M210	1

RECOMMENDED SPARE PARTS LIST

ITEM	DESCRIPTION	PART NUMBER	QTY
29	O-Ring	AC41029	1
30	Piston	AC41030	1
40	Upper Jaw	AC41040	1
44	Latch Spring	AC41044	1
45	Latch	AC41045	1
47	Feeder Blade	AC41047	1
50	Lower Jaw	AC41050	1
64	Pusher Spring	AC01M064	1
210	Spring Assy.	AC01M210	1

PERIODIC MAINTENANCE

1. Keeping clean of the tools

Do not set tools at the place where will get damage easily. Please keep from dust and humidification. Putting the tool in proper temperature is very important when the tool does not be used for a long time.

2. Cleaning the obstacle inside of tool

After using tools, please clean any obstacle blocking in JAWS (#40, #50). Keeping the tools clean is better.

3. Putting down tools lightly

After work, please put tools down lightly to avoid damaging the body and the magazine of tool.

4. Lubrication

To insure long, trouble-free service, we recommend air line lubricators and Filter Units for proper lubrication and clean, dry air. A good grade of oil that emulsifies in water is recommended for air tools.

5. Manual oiling

Although the jaws and other moving parts of the tool do need to be oiled, periodic oiling in small amounts may increase the serviceable life of the tool that receives heavy use. On a daily basis, place 4 -5 drops of light non-detergent oil into the inlet fitting where the supply line connects on the bottom of the handle.

LIMITED WARRANTY

ANN-CHAIN ENTERPRISE CO., LTD. warrants that the Pneumatic C-Ring tool is free from Defects in material and workmanship under normal use, within half year from the date of purchase, in the country of purchase. The warranty is extended to the original purchaser only. All parts except the consumable parts are warranted for half year from date of purchase and will be replaced if the sole judgment of ANN-CHAIN ENTERPRISE CO., LTD. they should be deemed defective over and above that considered to be normal wear.

THE WAYS OF ELIMINATING SIMPLE BREAKDOWN

◆ AIR LEAK

A. Motionless position and the front leak

1. The part No.16 Front Valve Seat is not locked deep enough.
2. The part No.59 inlet is not closed enough but it would not affect any operation.

B. Motion position and the front leak

1. Part No.5 Rear Valve Seat is locked too deep.
2. The inlet No.59 is not closed enough but it would not affect any working.

◆ No working or trigger stuck

1. The parts No.5 and No.16 are locked too deep to make assembly No.208 immovable.
2. Lacking for maintenance and getting rusty on assembly No.208 which is immovable.
3. The part No.29 O-Ring is worn and torn or part No.30 is loose.
4. The part No.17 Throttle Stem could not bounce out which may be stuck by part No.16 with anaerobic adhesive.

◆ The C-Rings may spurt out during operation.

1. Jaws of the tool are too tight. The part No.41 Jaw Bushing is worn and torn.
2. The jaws of tool are not smooth and hit on a C-Ring.
3. The C-Rings are with bad quality or not suitable on the tool.

◆ The ring is not made a good shape from the machine.

1. The jaws are broken.
2. The assembly #201 is broken or worn.
3. The C-Ring is not good enough or not fit on the machine.

WARNING

- ◆ Always read tool manual before operating.
- ◆ Do not point the tool at anyone.
- ◆ Keep hands and clothing away from the front of Jaws of the tool and away from all moving parts. Injury may result. Failure to follow these precautions may result in serious injury.
- ◆ Never actuate tool when loading, accidental injury may occur.
- ◆ Keep others at a safe distance from the tool while the tool is in operation as actuation occurs, possibly causing injury.
- ◆ Always wear safety glasses while operating or while in the vicinity of a tool in operation.
- ◆ Operate tool in an unobstructed work area.
- ◆ Air pressure should be maintained at 85 - 120 PSI (6 - 8 bars) using 1/4"(6.35mm) ID air hose. Higher pressures will not increase the operating speed of the tool and may cause damage to it.
- ◆ Do not use bottled gases such as oxygen, hydrogen, carbon dioxide or other combustible gasses.
- ◆ Disconnect air supply before servicing.