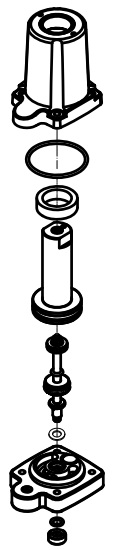


**NO.210** Diaphragm & Jaw Cylinder Assy  
10,11,12,29,31,114,202,203,204



**NO.202** Adjustment Stroke Assy  
14,15



**NO.203** Reversal Cylinder Shaft Assy  
16,17,18,19,20,21



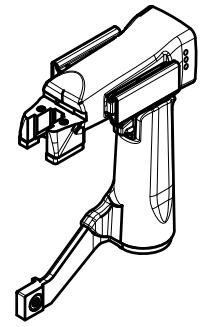
**NO.204** Diaphragm Assy  
22,23,24,25,26,27,28,30,32



**NO.205** Valve Assy  
33,35,36,38



**NO.200** Tool Body Assy  
46,49,50,57,58,62



**NO.206** Piston Assy  
39,40,41



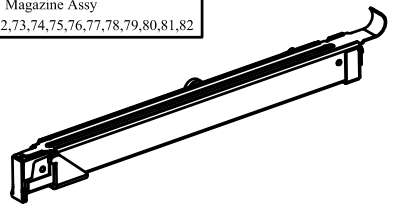
**NO.207** Valve Liner Assy  
51,52,53,54



**NO.208** Cylinder Top Valve Assy  
55,56



**NO.201** Magazine Assy  
59,70,71,72,73,74,75,76,77,78,79,80,81,82



## Pneumatic Stapler AE02BJ

ITEM	DESCRIPTION	PART NO.	Q'TY	ITEM	DESCRIPTION	PART NO.	Q'TY	ITEM	DESCRIPTION	PART NO.	Q'TY
1	Bridge Screw	AE01001	1	36	Valve	AE01036	1	71	Copper Roller	AE01071	1
2	Bridge Screw Washer	AE01002	1	37	Valve Lower O-Ring	AE01037	1	72	Pusher Spring	AE01072	1
3	Bush	AE01003	1	38	Plastic Cover	AE01038	1	73	Cover	AE01073	1
4	Jaw Screw	AE01004	4	39	Piston O-Ring	AE01039	1	74	Stop Spring Screw	AE01074	1
5	Washer	AE01005	8	40	Piston	AE01040	1	75	Washer	AE01075	2
6	Jaw Selflocking Nut	AE01006	6	41	Piston Pin	AE01041	1	76	Magazine Stop	AE01076	1
7	Bridge	AE01007	1	42	Driver Blade	AE02042	1	77	Stop Bush	AE01077	1
8	Washer	AE01008	4	43	Cylinder O-Ring	AE01043	1	78	Stop Screw	AE01078	1
9	Head Screw	AE01009	4	44	Cylinder	AE01044	1	79	Cover Contrast	AE01079	1
10	Jaw Cylinder	AE01010	1	45	Shock Absorber	AE01045	1	80	Check Pin	AE01080	1
11	Jaw Cylinder O-Ring	AE01011	1	46	Plier Body	AE01046	1	81	Magazine	AE01081	1
12	Sleeve	AE01012	1	47	Nose Plate	AE02047	1	82	Magazine Pin	AE02082	1
13	Jaw Piston O-Ring	AE01013	1	48	Nose Plate Screw	AE01048	2	84	Riveting Screw	AE01084	2
14	Washer Adjustment Stroke	AE01014	1	49	Body Side Plate	AE01049	2	85	Plier Reveting	AE01085	1
15	Piston Gasket	AE01015	1	50	Body Side Plate Pin	AE01050	6	88	Long Jaw ( R )	AE01BJ088	1
16	Shaft Selflocking Nut	AE01016	1	51	Valve Liner Top O-Ring	AE01051	1	89	Long Jaw(L)	AE01BJ089	1
17	Reversal Piston O-Ring	AE01017	1	52	Valve Liner	AE01052	1	90	Long Jaw	AE01BJ090	1
18	Reversal Cylinder Piston	AE01018	1	53	Sealing O-Ring	AE01053	2	114	Washer	AE01114	1
19	Shaft Top O-Ring	AE01019	1	54	Valve Liner Lower O-Ring	AE01054	1	116	Spring	AE01116	1
20	Reversal Cylinder Ring Nut	AE01020	1	55	Cylinder Top Valve	AE01055	1	119	Spring	AE01119	1
21	Reversal Cylinder Shaft	AE01021	1	56	Valve Top O-Ring	AE01056	2	120	Screw	AE01120	4
22	Diaphragm Valve	AE01022	1	57	Sleeve	AE01057	1	121	Washer	AE01121	4
23	Diaphragm Valve Top O-Ring	AE01023	1	58	Body Pin	AE01058	1	122	Nut	AE01122	4
24	Spring	AE01024	1	59	Stop Ring	AE01059	2	200	Tool Body Assy.	AE01200	1
25	Diaphragm	AE01025	1	60	Trigger	AE01060	1	201	Magazine Assy.	AE02201	1
26	Diaphragm Valve Lower O-Ring	AE01026	1	61	Trigger Pin	AE01061	1	202	Adjustment Stroke Assy.	AE01202	1
27	O-Ring	AE01027	1	62	Body Screw	AE01062	1	203	Reversal Cylinder Shaft Assy.	AE01203	1
28	Diaphragm Hole Lower O-Ring	AE01028	1	63	O-Ring	AE01063	1	204	Diaphragm Assy.	AE01204	1
29	Shaft Lower O-Ring	AE01029	1	64	Inlet Nozzle	AE01064	1	205	Valve Assy.	AE01205	1
30	Diaphragm Int. O-Ring	AE01030	1	65	Air Inlet	AE01065	1	206	Piston Assy.	AE01206	1
31	Ring Nut Shaft	AE01031	1	66	Block Screw	AE01066	1	207	Valve Liner Assy.	AE01207	1
32	Diaphragm Hole Top O-Ring	AE01032	1	67	Rear Block	AE01067	1	208	Cylinder Top Valve Assy.	AE01208	1
33	Valve Top	AE01033	1	68	Block Spring	AE01068	2	210	Diaphragm & Jaw Cylinder Assy.	AE01210	1
34	Valve Top O-Ring	AE01034	1	69	Spring Block T	AE01069	1	214	Long Jaw Assy.	AE01BJ214	1
35	Valve Top O-Ring	AE01035	1	70	Pusher	AE02070	1				



