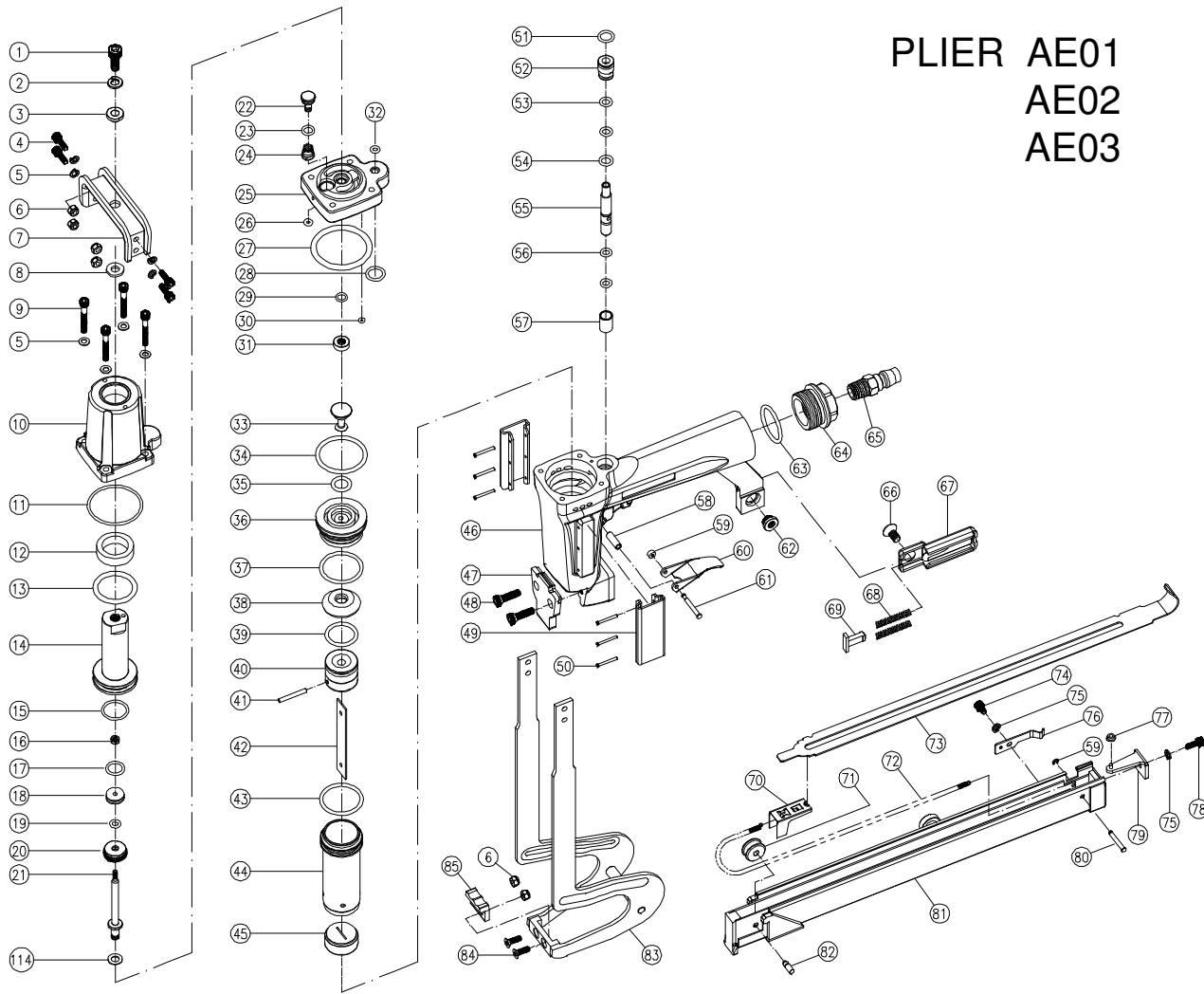
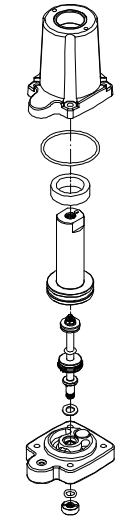


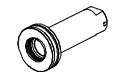
# PLIER AE01 AE02 AE03



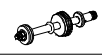
**NO.210** Diaphragm & Jaw Cylinder Assy  
10,11,12,29,31,114,202,203,204



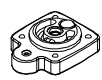
**NO.202** Adjustment Stroke Assy  
14,15



**NO.203** Reversal Cylinder Shaft Assy  
16,17,18,19,20,21



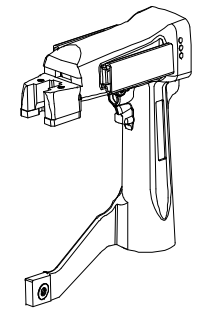
**NO.204** Diaphragm Assy  
22,23,24,25,26,27,28,30,32



**NO.205** Valve Assy  
33,35,36,38



**NO.200** Tool Body Assy  
46,49,50,57,58,62



**NO.206** Piston Assy  
39,40,41



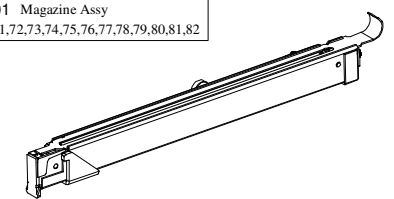
**NO.207** Valve Liner Assy  
51,52,53,54

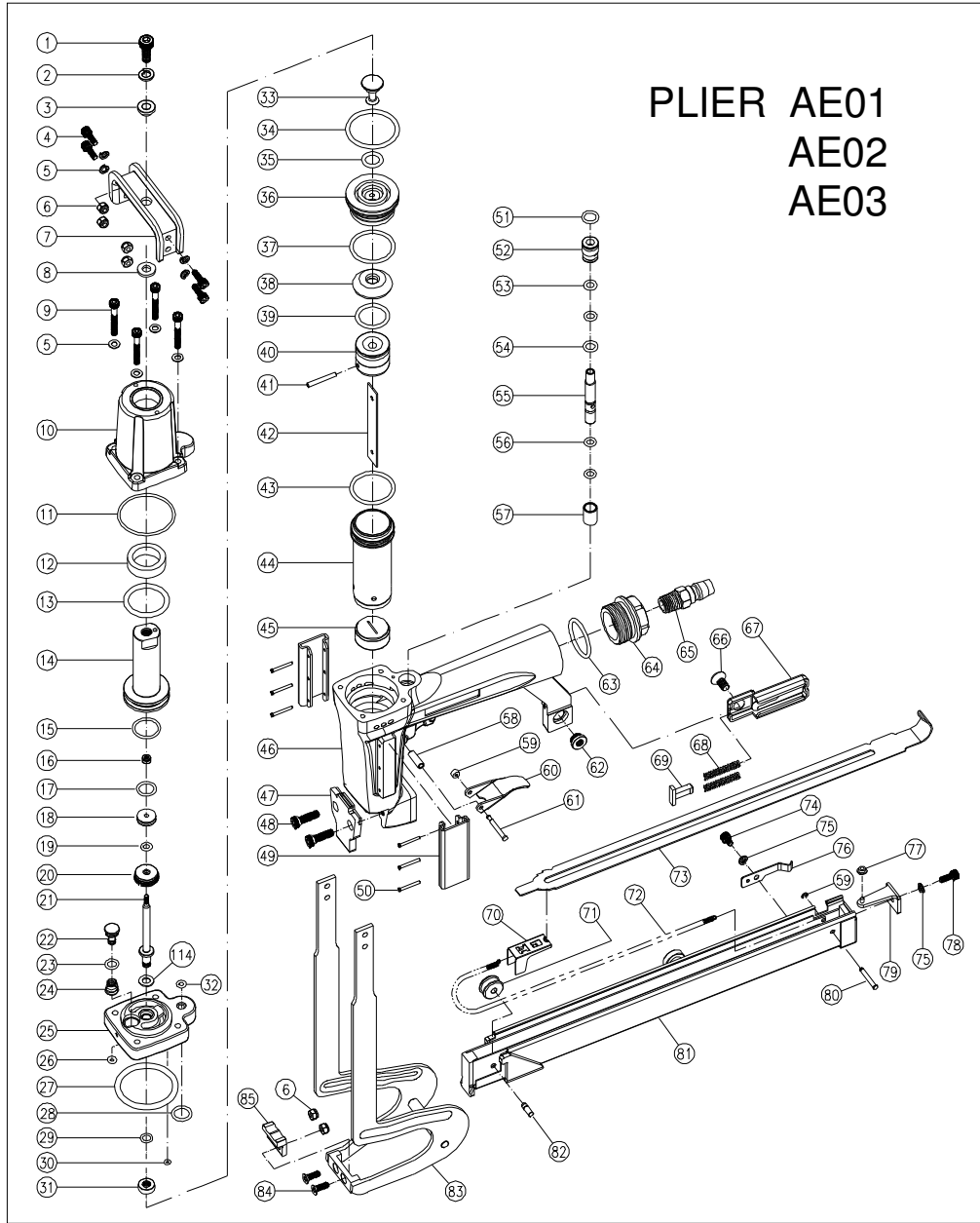


**NO.208** Cylinder Top Valve Assy  
55,56



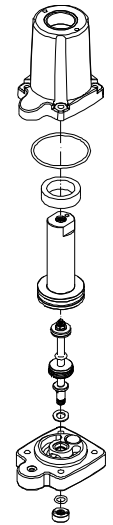
**NO.201** Magazine Assy  
59,70,71,72,73,74,75,76,77,78,79,80,81,82



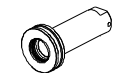


**PLIER AE01  
AE02  
AE03**

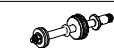
**NO.210 Diaphragm & Jaw Cylinder Assy**  
10,11,12,29,31,114,202,203,204



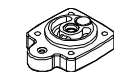
**NO.202 Adjustment Stroke Assy**  
14,15



**NO.203 Reversal Cylinder Shaft Assy**  
16,17,18,19,20,21



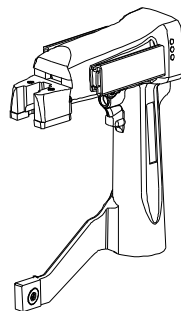
**NO.204 Diaphragm Assy**  
22,23,24,25,26,27,28,30,32



**NO.205 Valve Assy**  
33,35,36,38



**NO.200 Tool Body Assy**  
46,49,50,57,58,62



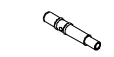
**NO.206 Piston Assy**  
39,40,41



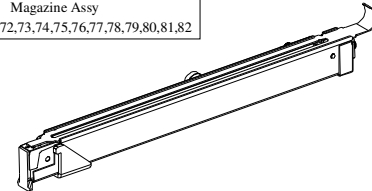
**NO.207 Valve Liner Assy**  
51,52,53,54



**NO.208 Cylinder Top Valve Assy**  
55,56

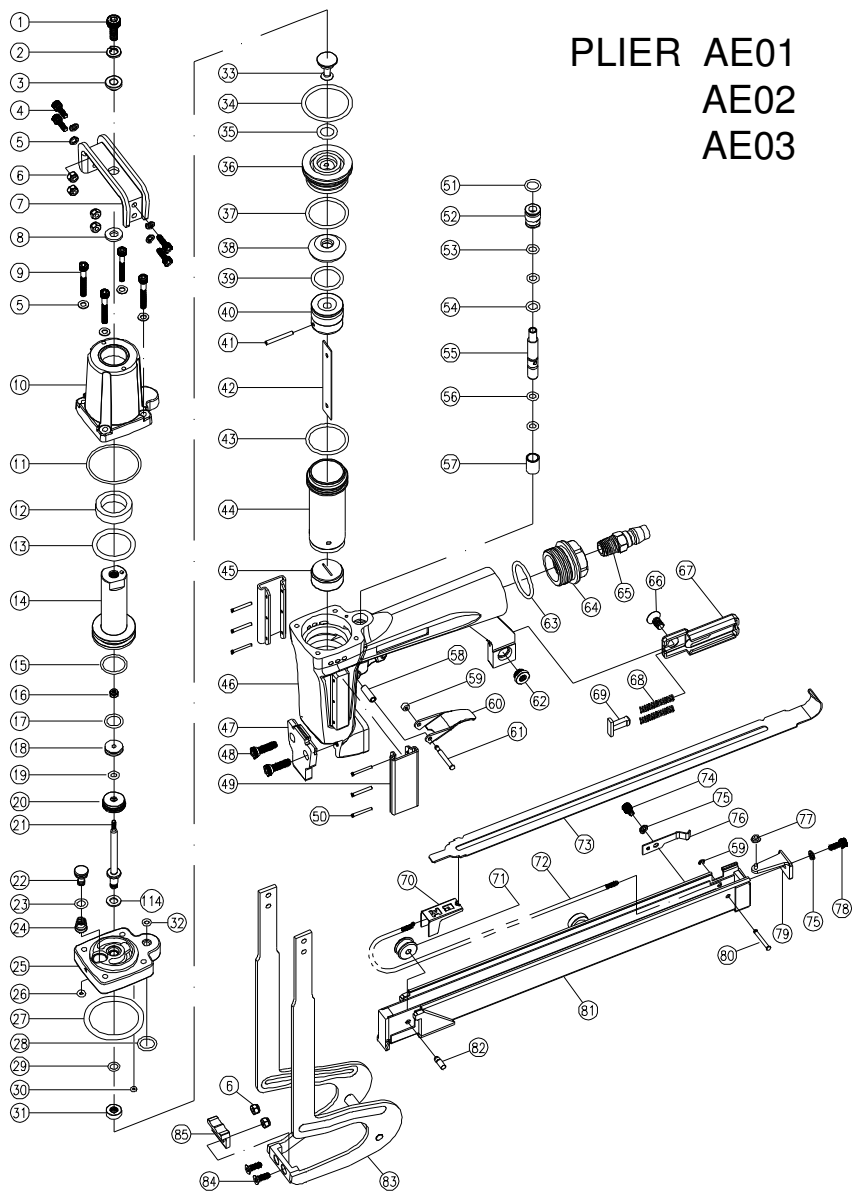


**NO.201 Magazine Assy**  
59,70,71,72,73,74,75,76,77,78,79,80,81,82

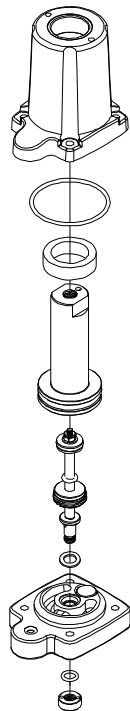


ITEM	DESCRIPTION	TOOL NO	PART NUMBER	QTY
1	Bridge Screw		AE01001	1
2	Bridge Screw Washer		AE01002	1
3	Bush		AE01003	1
4	Jaw Screw		AE01004	4
5	Washer		AE01005	8
6	Jaw Sdlocking Nut		AE01006	1
7	Bridge		AE01007	1
8	Washer		AE01008	4
9	Head Screw		AE01009	1
10	Jaw Cylinder		AE01010	1
11	Jaw Cylinder O-Ring		AE01011	1
12	Slieve		AE01012	1
13	Jaw Piston O-Ring		AE01013	1
14	Washer Adjustment Stroke		AE01014	1
15	Piston Gasket		AE01015	1
16	Shaft Selflocking Nut		AE01016	1
17	Reversal Piston O-Ring		AE01017	1
18	Reversal Cylinder Piston		AE01018	1
19	Shaft Top O-Ring		AE01019	1
20	Reversal Cylinder Ring Nut		AE01020	1
21	Reversal Cylinder Shaft		AE01021	1
22	Diaphragm Valve		AE01022	1
23	Diaphragm Valve Top O-Ring		AE01023	1
24	Spring		AE01024	1
25	Diaphragm		AE01025	1
26	Diaphragm Valve Lower O-Ring		AE01026	1
27	O-Ring		AE01027	1
28	Diaphragm Hole Lower O-Ring		AE01028	1
29	Shaft Lower O-Ring		AE01029	1
30	Diaphragm Lin. O-Ring		AE01030	1
31	Ring Nut Shaft		AE01031	1
32	Diaphragm Hole Top O-Ring		AE01032	1
33	Valve Top		AE01033	1
34	Valve Top O-Ring		AE01034	1
35	Valve Top O-Ring		AE01035	1
36	Valve		AE01036	1
37	Valve Lower O-Ring		AE01037	1
38	Plastic Cover		AE01038	1
39	Piston O-Ring		AE01039	1
40	Piston	AE01 AE01040 AE02 AE02040 AE03 AE01040		1
41	Piston Pin		AE01041	1
42	Driver Blade	AE01 AE01042 AE02 AE02042 AE03 AE01042		1
43	Cylinder O-Ring		AE01043	1
44	Cylinder		AE01044	1
45	Shock Absorber		AE01045	1
46	Plier Body		AE01046	1
47	Nose Plate	AE01 AE01047 AE02 AE02047 AE03 AE03047		1
48	Nose Plate Screw		AE01048	2
49	Body Side Plate		AE01049	2
50	Body Side Plate Pin		AE01050	6
51	Valve Liner Top O-Ring		AE01051	1
52	Valve Liner		AE01052	1
53	Sealing O-Ring		AE01053	2
54	Valve Liner Lower O-Ring		AE01054	1
55	Cylinder Top Valve		AE01055	1
56	Valve Top O-Ring		AE01056	2
57	Slieve		AE01057	1
58	Body Pin		AE01058	1
59	Stop Ring		AE01059	2
60	Trigger		AE01060	1
61	Trigger Pin		AE01061	1
62	Body Screw		AE01062	1
63	O-Ring		AE01063	1
64	Inlet Nozzle		AE01064	1
65	Air Inlet		AE01065	1
66	Block Screw		AE01066	1
67	Rear Block		AE01067	1
68	Block Spring		AE01068	2
69	Spring Block T		AE01069	1
70	Pusher	AE01 AE01070 AE02 AE02070 AE03 AE01070		1
71	Copper Roller		AE01071	1
72	Pusher Spring		AE01072	1
73	Cover		AE01073	1
74	Stop Spring Screw	AE01	AE01074	1
75	Washer		AE01075	2
76	Magazine Stop		AE01076	1
77	Stop Bush		AE01077	1
78	Stop Screw		AE01078	1
79	Cover Contrast		AE01079	1
80	Check Pin		AE01080	1
81	Magazine	AE01 AE01081 AE02 AE02081 AE03 AE01081		1
82	Magazine Pin		AE01082	1
83	Short Jaw		AE01083	1
84	Riveting Screw		AE01084	2
85	Plier Riveting		AE01085	1
114	Washer		AE01114	1

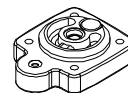
# PLIER AE01 AE02 AE03



**NO.210** Diaphragm &  
Jaw Cylinder  
Assy  
10,11,12,29,31,114,202  
203,204



**NO.204** Diaphragm Assy  
22,23,24,25,26,27,28,30,32



**NO.205** Valve Assy  
33,35,36,38



**NO.206** Piston Assy  
39,40,41



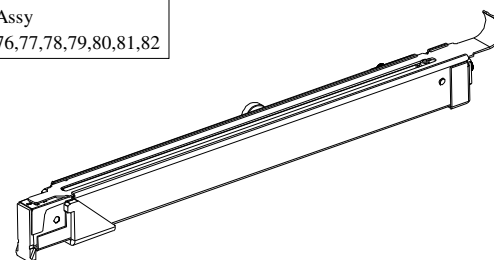
**NO.207** Valve Liner Assy  
51,52,53,54



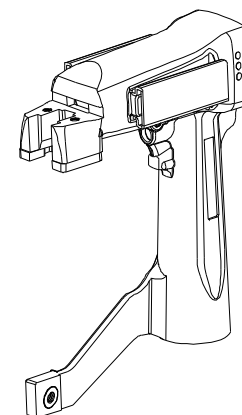
**NO.208** Cylinder Top  
Valve Assy  
55,56



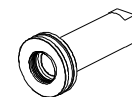
**NO.201** Magazine Assy  
59,70,71,72,73,74,75,76,77,78,79,80,81,82



**NO.200** Tool Body Assy  
46,49,50,57,58,62



**NO.202** Adjustment Stroke Assy  
14,15



**NO.203** Reversal Cylinder  
Shaft Assy  
16,17,18,19,20,21

