



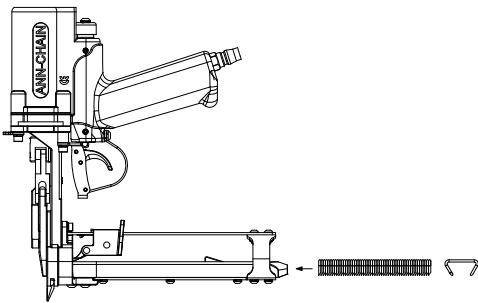
PNEUMATIC HOG RING TOOL

AD42M & AD43M

OPERATING INSTRUCTIONS

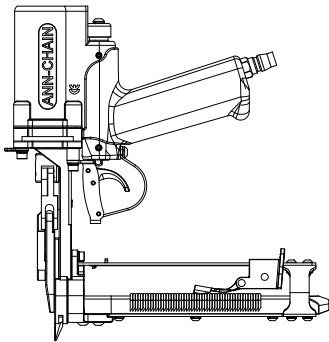
STEP 1.

Load D-Ring on the magazine and push D-Ring till angle of magazine



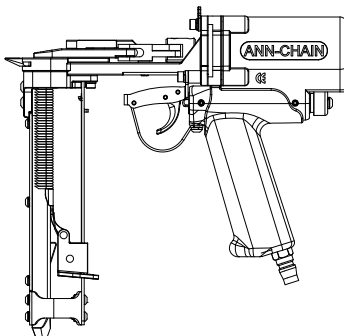
STEP 2.

Pull pusher spring to end position of magazine



STEP 3.

Hold pusher and engage pusher with D-Ring and push pusher forward. Completed loading D-Ring on the magazine.



Note: New design of pusher (with two ears), you can load D-Ring first then pull pusher later. It is easier loading D-Ring.

This tool is compliant with or conforms to EN 792-13



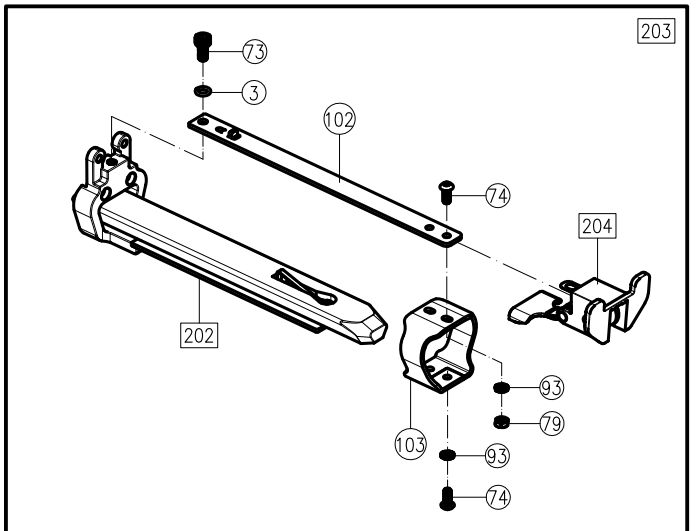
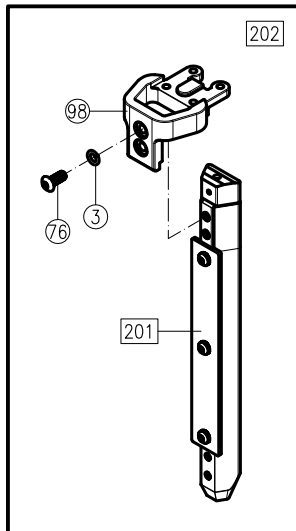
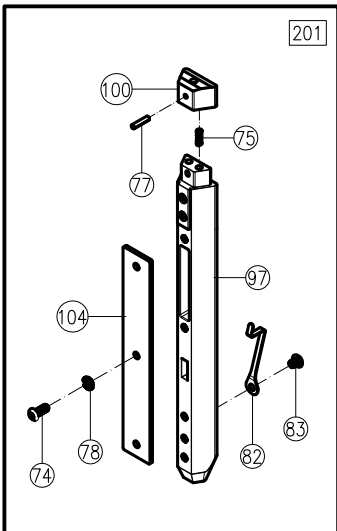
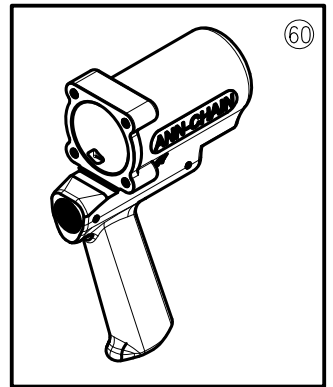
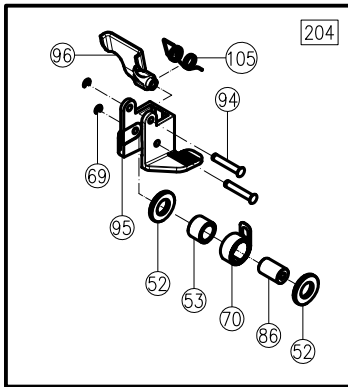
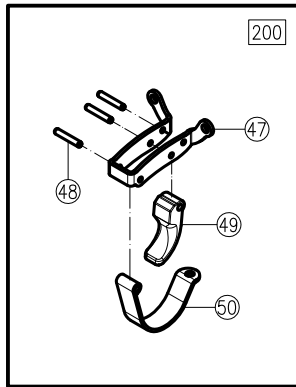
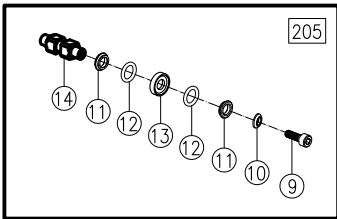
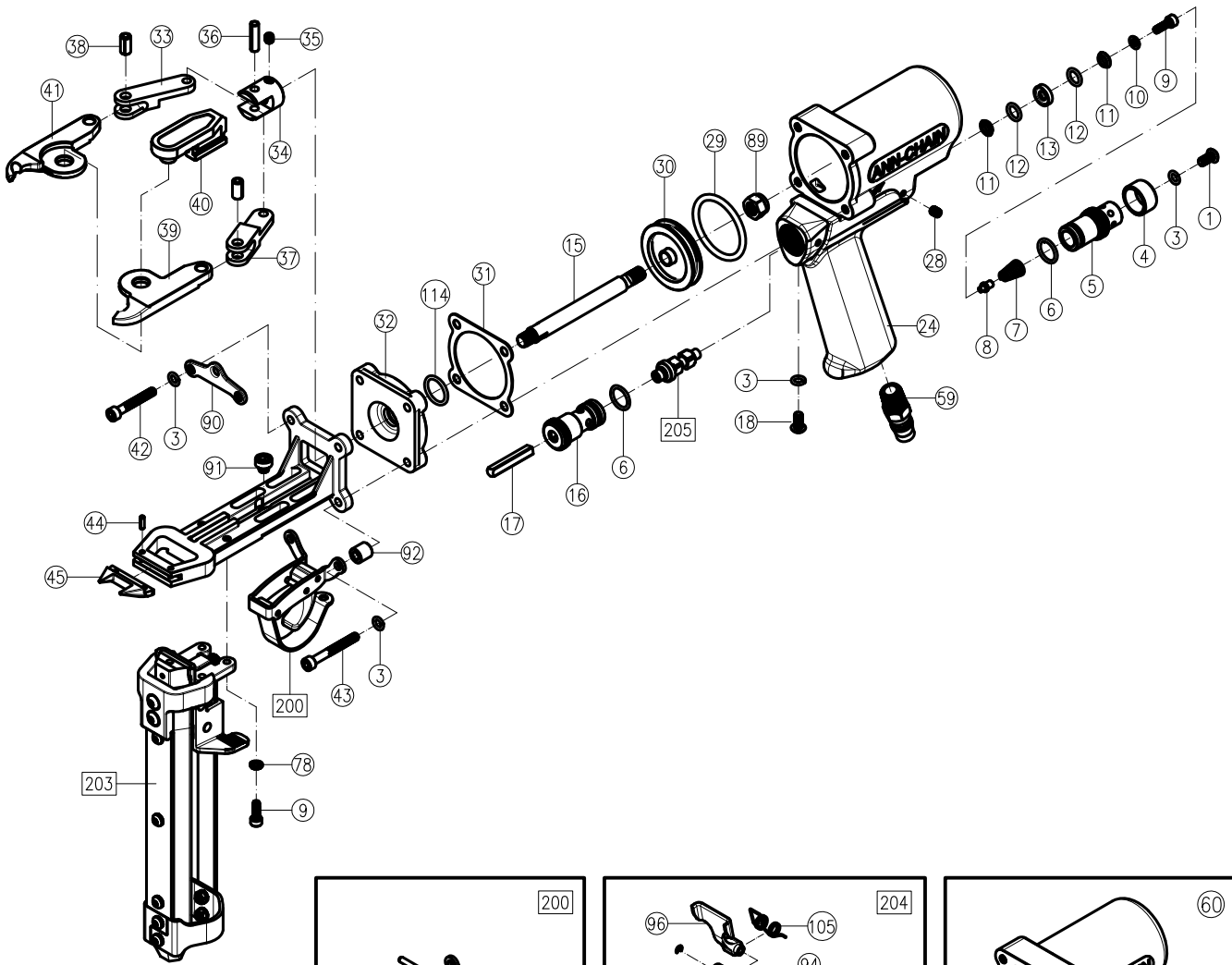
ANN-CHAIN ENTERPRISE CO., LTD.

NO.65-5, LANE 540, YOAN-FONG RD., CHANG HUA CITY,
TAIWAN, R.O.C.

TEL: 886-4-7521297 FAX: 886-4-7521293

WEB SITE: www.ann-chain.com

AD42M & AD43M



PARTS LIST

ITEM	DESCRIPTION	TOOL NO.	PART NO.	Q'TY	ITEM	DESCRIPTION	TOOL NO.	PART NO.	Q'TY
1	Set Screw		AD01001	1	59	Inlet Bushing		AD01059	1
3	Shakeproof lock Washer		AD01003	6	60	Housing With Rubber Grip		AD41060	1
4	Air Deflector		AD01004	1	70	Pusher Spring		AC01M070	1
5	Rear Valve Seat		AD01005	1	73	Cap Screw		AD41073	1
6	O-Ring		AD01006	2	74	Screw		AD41074	5
7	Throttle Spring		AD01007	1	75	Spring		AD41075	2
8	Throttle Spring Locator		AD01008	1	76	Screw		AD41076	2
9	Throttle Valve Screw		AD01009	3	77	Pin		AD41077	1
10	Valve Screw Washer		AD01010	2	78	Washer		AD41078	2
11	O-Ring Support		AD01011	4	79	Nut		AD41079	4
12	O-Ring		AD01012	4	82	Clip Anti-Backup		AC02082	1
13	O-Ring Center Support		AD01013	2	83	Screw		AC02083	1
14	Throttle Valve Spacer		AD01014	1	86	Spring Roll		AC01M097	1
15	Piston rod		AD41015	1	89	Flexloc Nut		AC01089	1
16	Front Valve Seat		AD01016	1	90	Hanger		AD41090	1
17	Throttle Stem		AD01017	1	91	Cap Screw		AD41091	1
18	Button Head Cap Screw		AD01018	1	92	Pad Roll		AD41092	2
28	Set Screw		AD01028	1	93	Washer		AD41093	2
29	O-Ring		AC41029	1	94	Pusher Pin		AC01M094	2
30	Piston		AC41030	1	95	Pusher Set		AD41M095	1
31	Cylinder Gasket		AC41031	1	96	Pusher		AD41M096	1
32	Piston Stop Spacer		AD41032	1	97	Magazine (Short)	AD42M	AD41M097	1
33	Right Arm Link		AD41033	1		Magazine (Long)	AD43M	AD43M097	
34	Clevis		AD01034	1	98	Magazine Set		AD41M098	1
35	Set Screw		AD01035	1	100	Magazine Shoe		AD41M100	1
36	Roll Pin		AD01036	1	102	Feeder Guid Rail (Short)	AD42M	AD41M102	1
37	Left Arm Link		AD01037	1		Feeder Guid Rail (Long)	AD43M	AD43M102	
38	Roll Pin		AD01038	2	103	Feeder Arm		AD41M103	1
39	Left Jaw		AD41039	1	104	Guard (Short)	AD42M	AD41M104	1
40	Slide		AD41040	1		Guard (Long)	AD43M	AD43M104	
41	Right Jaw		AD41041	1	105	Pusher Spring		AD41M105	1
42	Cap Screw		AD41042	2	114	O-Ring		AD41114	1
43	Cap Screw		AD41043	2	200	Trigger Guard Bracket Assy.		AD41200	1
44	Roll Pin		AD01044	2	201	Magazine Assy. (Short)	AD42M	AD41M201	1
45	Teeth (Straight)		AD41045	1		Magazine Assy. (Long)	AD43M	AD43M201	
47	Trigger Guard Bracket		AD41047	1	202	Magazine Assy. (Short)	AD42M	AD41M202	1
48	Roll Pin		AD01048	3		Magazine Assy. (Long)	AD43M	AD43M202	
49	Trigger		AD01049	1	203	Magazine with Pusher Assy. (Short)	AD42M	AD41M203	1
50	Trigger Guard		AD01050	1		Magazine with Pusher Assy. (Long)	AD43M	AD43M203	
52	Plastic Washer		AC01M052	2	204	Pusher Assy.		AD41M204	1
53	Plastic Roller		AC01M053	1	205	Throttle Valve Spacer Assy.		AC01208	1

RECOMMENDED SPARE PARTS LIST

ITEM	DESCRIPTION	PART NUMBER	QTY
29	O-Ring	AC41029	1
39	Left Jaw	AD41039	1
41	Right Jaw	AD41041	1
45	Teeth (Straight)	AD41045	1
204	Pusher Assy.	AD41M204	1

PERIODIC MAINTENANCE

1. Keeping clean of the tools

Do not set tools at the place where will get damage easily. Please keep from dust and humidification. Putting the tool in proper temperature is very important when the tool does not be used for a long time.

2. Cleaning the obstacle inside of tool

After using tools, please clean any obstacle blocking in JAWS (#39, #41). Keeping the tools clean is better.

3. Putting down tools lightly

After work, please put tools down lightly to avoid damaging the body and the magazine of tool.

4. Lubrication

To insure long, trouble-free service, we recommend air line lubricators and Filter Units for proper lubrication and clean, dry air. A good grade of oil that emulsifies in water is recommended for air tools.

5. Manual oiling

Although the jaws and other moving parts of the tool do need to be oiled, periodic oiling in small amounts may increase the serviceable life of the tool that receives heavy use. On a daily basis, place 4 -5 drops of light non-detergent oil into the inlet fitting where the supply line connects on the bottom of the handle.

WARNING

- ◆ Always read tool manual before operating.
- ◆ Do not point the tool at anyone. Keep hands and clothing away from the front of Jaws of the tool and away from all moving parts. Injury may result. Failure to follow these precautions may result in serious injury.
- ◆ Never actuate tool when loading, accidental injury may occur.
- ◆ Keep others at a safe distance from the tool while the tool is in operation as actuation occurs, possibly causing injury.
- ◆ Always wear safety glasses while operating or while in the vicinity of a tool in operation.
- ◆ Operate tool in an unobstructed work area.
- ◆ Air pressure should be maintained at 90 - 110 PSI (6 - 7 bars) using 1/4" (6.35mm) ID air hose. Higher pressures will not increase the operating speed of the tool and may cause damage to it.
- ◆ Do not use bottled gases such as oxygen, hydrogen, carbon dioxide or other combustible gasses.
- ◆ Disconnect air supply prior to maintenance or repair of tool.

THE WAYS OF ELIMINATING SIMPLE BREAKDOWN

Most problems with tools are a result of:

1. Normal wear and tear to components due to high usage.
2. Lack of proper lubrication.
3. Dirt or water that may enter the tool via air lines.
4. Defective rings.

◆ Jamming problems

The most common reason for jamming problems is worn parts. Common parts that see a lot of wear are the jaws, pusher assembly and the pusher spring.

Common causes of jams:

- Worn or chipped jaws. → Replace jaws
- Damaged pusher. → Replace pusher
- Damaged pusher spring. → Replace spring
- Defective fasteners. → Return samples of rings to Ann-Chain for testing.

◆ Ring does not close completely

- Check air pressure. Line pressure should be between 90 and 110 psi (6 – 7 bar).
- A 1/4" (6.35 mm) or larger air line should be used. Air lines in excess of 110 PSI can starve the tool of air preventing normal operation.
- Air leak in tool
- Check for foreign debris in jaw area.
- The jaws may be worn from extended use. Check ring groove, if worn or chipped replacement is recommended.
- Unlubricated and/or corroded parts may cause tool to function poorly. Light oil should be applied on a regular basis to surfaces of carriage, jaws, linkages and pins in corrosive or humid environments. Excessive amounts of oil will only attract dirt and foreign material which will hamper tool operation.
- Defective rings –
 1. Wire too hard
 2. Rough surface
 3. Cut-off burrs
 4. Wrong rings - Return samples of rings to your Vertex Fasteners representative for testing.

◆ Feeding problems

- If rings do not feed smoothly down magazine, check constant force spring for proper tension. There should be no kinks or bends in spring.
- Magazine should be free of dirt and other foreign matter.
- If rings feed freely down magazine but not into jaws, check jaws for freedom of movement or wear.
- Pusher latch worn, bent or broken. → Replace latch.
- Defective rings -
 1. Undersized (tight on magazine)
 2. Burrs
 3. Rings twisted
 4. Rings skewed on stick
 5. Rings out of line on stick
 6. Poor tape to ring adhesion
 7. Wrong rings - Return samples of rings to your Vertex Fasteners representative for testing.

◆ Air leak

If tool leaks air the most common cause is failed o-rings. Where the tool leaks air is important in determining the cause.

Tool leaks air when actuated operation weak

- Piston o-ring damaged. → Replace o-ring
- O-rings cut or cracked (valve area). → Replace o-rings
- Trigger defective. → Replace trigger

Note: some air may leak from trigger when actuated, this is normal. If leaking is excessive where it affects tool operation then trigger should be replaced.

LIMITED WARRANTY

ANN-CHAIN ENTERPRISE CO., LTD. warrants that the Pneumatic D-Ring tool is free from Defects in material and workmanship under normal use, within half year from the date of purchase, in the country of purchase. The warranty is extended to the original purchaser only. All parts except the consumable parts are warranted for half year from date of purchase and will be replaced if the sole judgment of ANN-CHAIN ENTERPRISE CO., LTD. they should be deemed defective over and above that considered to be normal wear.