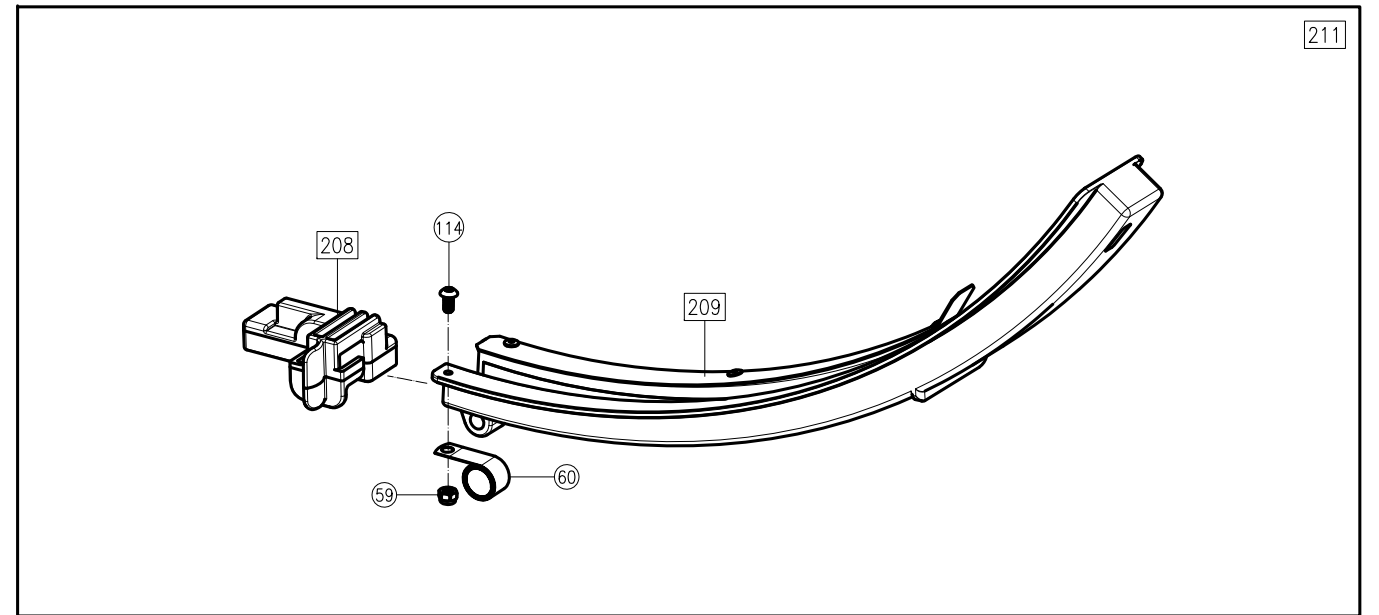
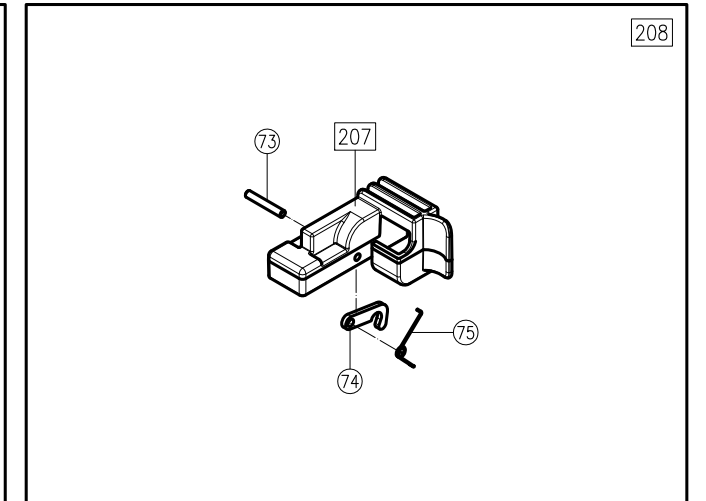
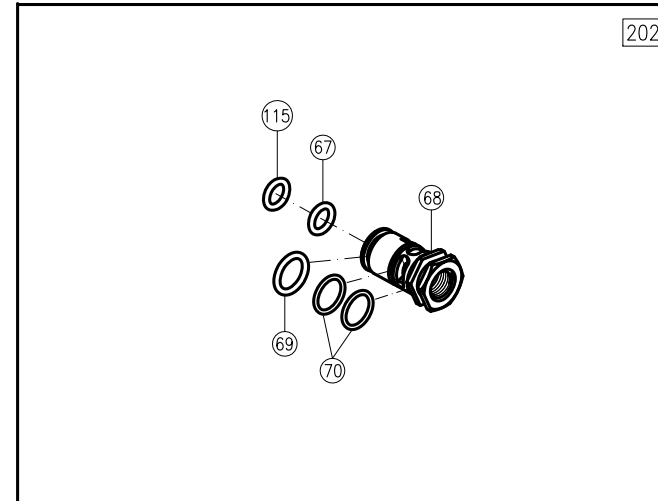
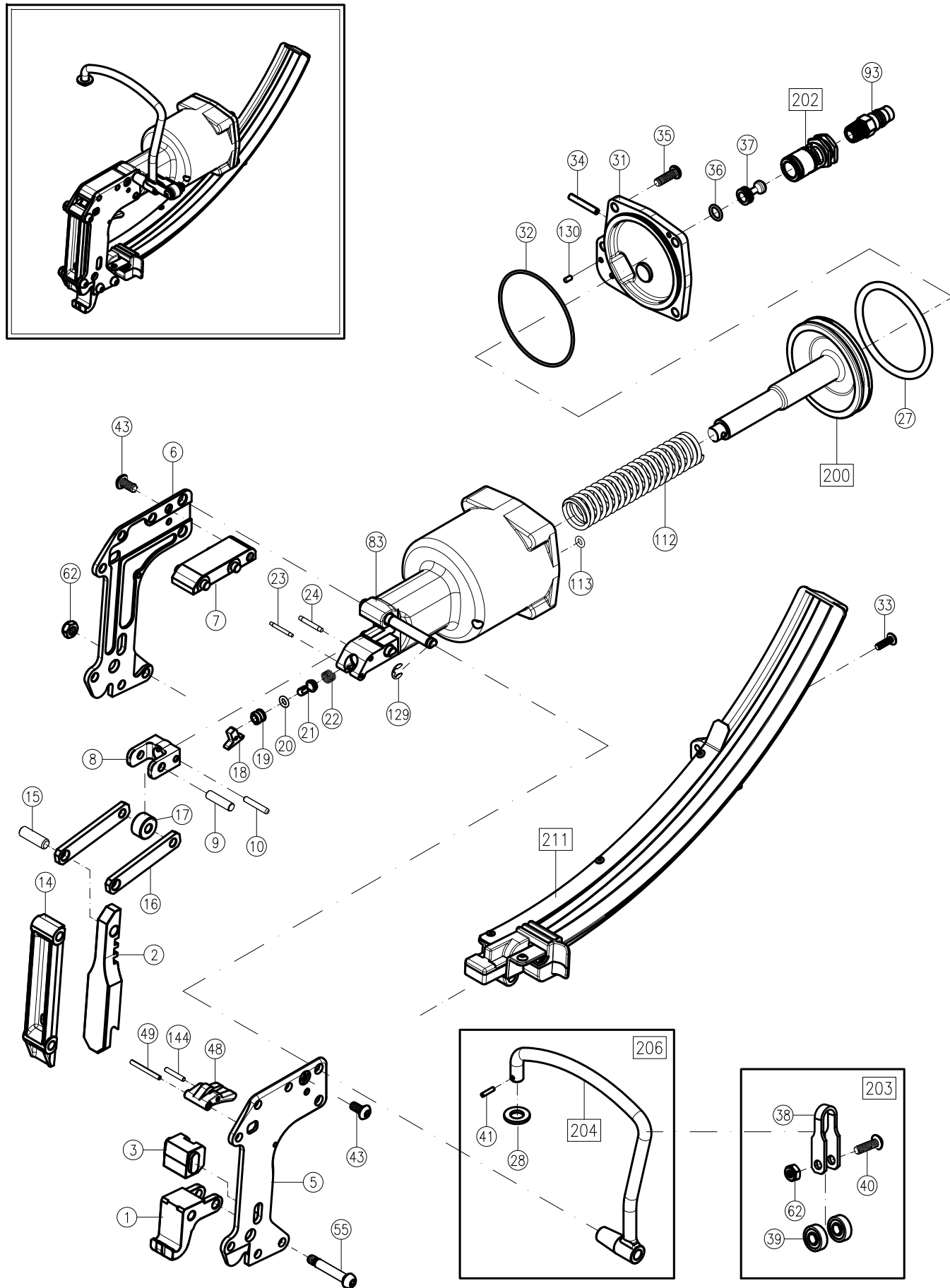


# PNEUMATIC CLINCHING CLIP TOOL



## RECOMMENDED SPARE PARTS LIST

ITEM	DESCRIPTION	PART NUMBER	Q'TY
1	Anvil		1
2	Blade		1
27	Piston O-Ring	AF01027	1
32	O-Ring	AF01032	1
36	O-Ring	AE01051	1
37	Valve	AF701037	1
60	O-Ring	AF01060	1

## PARTS LIST

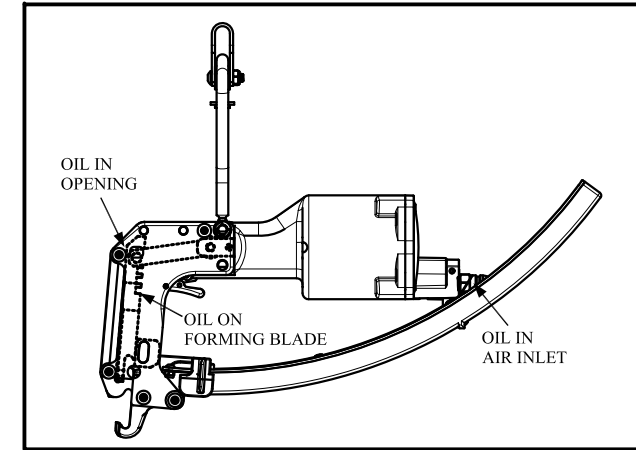
ITEM	DESCRIPTION	Tool TYPE	PART NO.	Q'TY	ITEM	DESCRIPTION	Tool TYPE	PART NO.	Q'TY
1	Anvil	AF701	AF01C001	1	35	Screw		AF01035	4
		AF702/AF704	AF02C001		36	O-Ring		AE01051	1
		AF703/AF706	AF03C001		37	Valve		AF701037	1
		AF705	AF05C001		38	Hanger Yoke		AF01038	1
		AF707	AF07C001		39	Roller Bearing		AF01039	2
		AF731/AF735	AF31C001		40	Screw		AF01040	1
		AF732	AF32C001		41	Hanger Pin		AF01041	1
		AF754/AF755/AF756	AF54C001		43	Screw		AC50071	2
2	Blade	AF754A/AF755A/AF756A	AF54AC001	1	48	Trigger		AF701048	1
		AF701	AF01002		49	Trigger Pin		AF701049	1
		AF702	AF02002		55	Plate Screw	AF701/702/703/704/705/706/707	AF701055	4
		AF703/AF706	AF03002		AF754(A)/AF755(A)/AF756(A)		2		
		AF704	AF04002		59	Screw		AF01059	1
		AF705	AF05002		60	Pusher Spring		AF01060	1
		AF707	AF07002		62	Flex-Nut		AF01062	2
		AF731	AF31002		67	O-Ring		AF701067	1
		AF732	AF32002		68	Valve Body		AF701068	1
		AF735	AF35002		69	O-Ring		AF01069	1
		AF754/AF754A	AF54002		70	O-Ring		AF701070	2
		AF755(A)/AF756(A)	AF55002		73	PIN	AF701/702/703/704/705/706/707	AF701073	1
		AF731/732/754(A)/755(A)/756(A)	AF731073						
3	Blade Guide	AF701	AF701003	1	74	Small Hook		AF01074	1
		AF702/AF704	AF702003		75	L Spring		AF01075	1
		AF703/AF706	AF703003		83	Housing		AF701083	1
		AF705	AF705003		93	Air Inlet		AC01059	1
		AF707	AF707003		112	Spring		AF701112	1
		AF731	AF731003		113	O-Ring		AC01012	1
		AF732	AF732003		114	Screw		AF701114	1
		AF735	AF735003		115	O-Ring		AF701115	1
		AF754/AF754A	AF754003		129	E-Clip		AF701129	1
		AF755(A)/AF756(A)	AF755003		130	Pin		AF701130	2
5	Side Plate L.H.		AF701005	1	144	Trigger Pin		AF701144	1
6	Side Plate R.H.		AF701006	1	200	Piston Assy.		AF701200	1
7	Top Plate		AF701007	1	202	Valve Assy.		AF701202	1
8	Yoke		AF701008	1	203	Arm Assy.		AF01203	1
9	Pin		AF701009	1	204	Hanger		AF701204	1
10	Pin		AF701010	1	206	Hanger Assy.		AF701206	1
14	Front Plate	AF701/702/703/704/705/706/707	AF701014	1	207	Pusher	AF701/702/703/704/705/706/707	AF701207	1
		AF754(A)/AF755(A)/AF756(A)	AF754014		AF731/732/754(A)/755(A)/756(A)		AF731207		
15	Link Pin		AF01015	1	208	Pusher Assy.	AF701/702/703/704/705/706/707	AF701208	1
16	Link		AF01016	2	AF731/732/754(A)/755(A)/756(A)		AF731208		
17	Roller		AF701017	1	209	Magazine Assy.	AF701/AF702	AF701209	1
18	Lever		AF701018	1			AF703/AF704	AF703209	
19	Valve Sleeve		AFE01019	1			AF705	AF705209	
20	O-Ring		AFE01020	1			AF706/AF707	AF706209	
21	Valve Piston		AFE01021	1			AF731/732/735/755(A)/756(A)	AF731209	
22	Spring		AFE01022	1	AF754(A)	AF754209			
23	Pin		AF701023	1	211	Magazine Complete	AF701/AF702	AF701211	1
24	Pin		AF701024	1			AF703/AF704	AF703211	
27	O-Ring		AF01027	1			AF705	AF705211	
28	Washer		AF01028	1			AF706/AF707	AF706211	
31	Cap		AF701031	1			AF731/732/735/755(A)/756(A)	AF731211	
32	O-Ring		AF01032	1	AF754(A)	AF754211			
33	Screw		AF701033	2					
34	Pin		AF01034	1					

## LUBRICATION IN PROPER INTERNAL PARTS

The clinching tool is a durable tool and will give long years of service when used correctly. Lubricate with 40# weight oil every working day and maintain the tool.

We recommend:

1. A drop or two of oil in the air inlet daily.
2. Put a drop or two of oil in main valve part #37 daily.
3. Whenever the tool is disassembled, the front plate #14 and blade #2 should be greased.
4. Add oil in opening of the left plate #5 and the right plate #6 daily.
5. Clean blade slot every certain time.



### PERIODIC MAINTENANCE

#### 1. Keeping clean of the tools

Do not set tools at the place where will get damage easily. Please keep from dust and humidification. Putting the tool in proper temperature is very important when the tool does not be used for a long time.

#### 2. Cleaning the obstacle inside of tool

After using tools, please clean any obstacle blocking in Anvil & Blade (#1, #2). Keeping the tools clean is better.

#### 3. Putting down tools lightly

After work, please put tools down lightly to avoid damaging the body and the magazine of tool.

#### 4. Lubrication

To insure long, trouble-free service, we recommend air line lubricators and Filter Units for proper lubrication and clean, dry air. A good grade of oil that emulsifies in water is recommended for air tools.

#### 5. Manual oiling

Although the blade and other moving parts of the tool do need to be oiled, periodic oiling in small amounts may increase the serviceable life of the tool that receives heavy use. On a daily basis, place 4 -5 drops of light non-detergent oil into the inlet fitting where the supply line connects.

### WARNING

- ◆ Always read tool manual before operating.
- ◆ Do not point the tool at anyone.
- ◆ Keep hands and clothing away from the front of Jaws of the tool and away from all moving parts. Injury may result. Failure to follow these precautions may result in serious injury.
- ◆ Always wear safety glasses while operating or while in the vicinity of a tool in operation.
- ◆ Air pressure should be maintained at 100 - 120 PSI (6.9 – 8.3 bars) using 1/4”(6.35mm) ID air hose. Higher pressures will not increase the operating speed of the tool and may cause damage to it.
- ◆ Do not use bottled gases such as oxygen, hydrogen, carbon dioxide or other combustible gasses.
- ◆ Disconnect air supply before servicing.